

**vtech®**

# Instruction Manual

## Let's Go, My Friend Pup



**VTech** understands that a child's needs and abilities change as they grow and with that in mind we develop our toys to teach and entertain at just the right level...

## **Pre-School**

**Interactive toys to develop their imagination and encourage language development**

## **vtech Baby**

**Toys that will stimulate their interest in different textures, sounds and colours**

### **I am...**

...responding to colours, sounds and textures

...understanding cause and effect

...learning to touch, reach, grasp, sit-up, crawl and toddle

**Birth-36 months**



### **I want...**

...to get ready for school by starting to learn the alphabet and counting

...my learning to be as fun, easy and exciting as can be

...to show my creativity with drawing and music so my whole brain develops

**3-6 years**



## **Electronic Learning Computers**

**Cool, aspirational and inspiring computers for curriculum related learning**

### **I need...**

...challenging activities that can keep pace with my growing mind

...intelligent technology that adapts to my level of learning

...National Curriculum based content to support what I'm learning at school

**4-10 years**

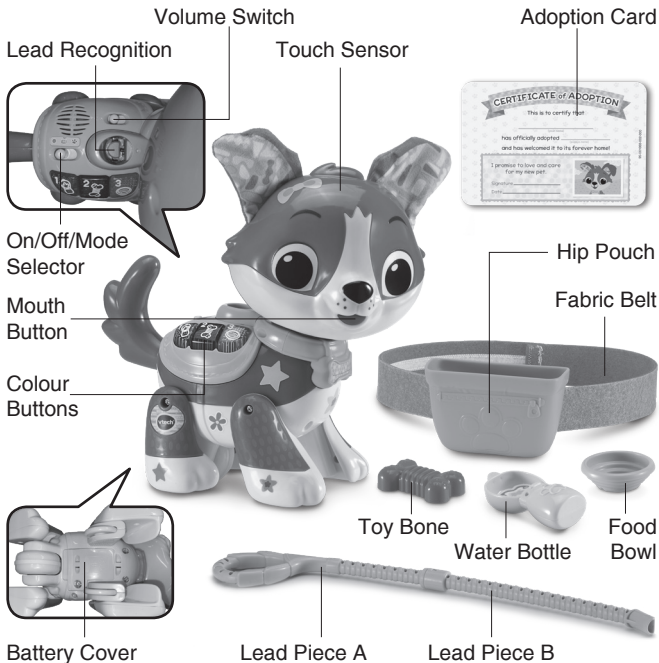


To learn more about this and other VTech® products, visit [www.vtech.co.uk](http://www.vtech.co.uk)

# INTRODUCTION

Thank you for purchasing the **Let's Go, My Friend Pup**.

Adopt this pup for hours of interactive play! Two learning modes introduce colours, numbers & puppy care tips. Walk your pup to hear interactive responses. Is your puppy hungry or thirsty? Use the play food and water to care for it!

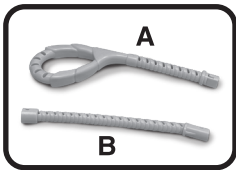


# INCLUDED IN THE PACKAGE

- Let's Go Rescue Pup



- Lead Piece A
- Lead Piece B



- 1 Hip Pouch
- 1 Fabric Belt



- 1 Toy Bone
- 1 Food Bowl
- 1 Water Bottle



- 1 Adoption Card



- 1 Sticker Sheet



- Quick Start Guide

## WARNING

All packing materials such as tape, plastic sheets, packaging locks, removable tags, cable ties, cords and packaging screws are not part of this toy, and should be discarded for your child's safety.

## NOTE

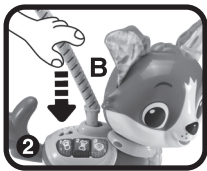
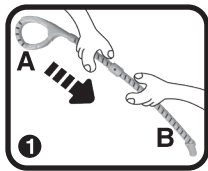
Please save this Instruction Manual as it contains important information.

# ASSEMBLY INSTRUCTIONS

With the **Let's Go, My Friend Pup**, safety comes first. Adult assembly required. For your child's safety, do not let them play with this toy until it is fully assembled.

## Lead Assembly

1. Insert the end of **Lead Piece A** into the top of **Lead Piece B**.
2. Insert the end of **Lead Piece B** into the **Lead Recognition** on the collar.
3. Hold the **Lead** and push the puppy along to play.



## Hip Pouch and Belt Assembly

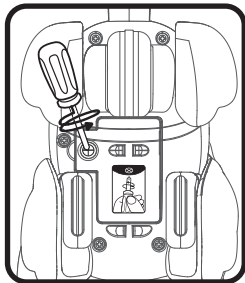
1. Identify the inner portion of the **Fabric Belt** by locating the long section of the hook-and-loop closure.
2. With the inner portion of the belt facing the back of the **Hip Pouch** where the two slots are, place the **Fabric Belt** ends through the **Hip Pouch** slots from the inside of the pouch.
3. The seams will hold the **Fabric Belt** in place from the inside of the **Hip Pouch**.
4. Put the **Fabric Belt** around the child's waist and secure with the hook-and-loop closure.



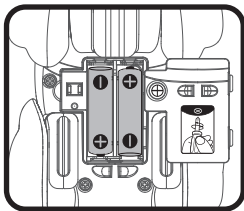
## GETTING STARTED

### Battery Removal and Installation

1. Make sure the unit is turned **Off**.
2. Find the battery cover located on the bottom of the unit, use a screwdriver to loosen the screw and then open the battery cover.
3. Remove old batteries by pulling up on one end of each battery.



4. Install 2 new AA (AM-3/LR6) batteries following the diagram inside the battery box. (For best performance, alkaline batteries or fully charged Ni-MH rechargeable batteries are recommended.)
5. Replace the battery cover and tighten the screw to secure.



## **BATTERY WARNING:**

KEEP OUT OF REACH OF CHILDREN.

Adult assembly required for battery installation.

If the battery compartment does not close securely, stop using the product and keep it away from children.

If you think batteries might have been swallowed or placed inside any part of the body, seek immediate medical attention.

## **IMPORTANT: BATTERY INFORMATION**

- Insert batteries with the correct polarity (+ and -).
- Do not mix old and new batteries.
- Do not mix alkaline, standard (carbon-zinc) or rechargeable batteries.
- Only batteries of the same or equivalent type as recommended are to be used.
- Do not short-circuit the supply terminals.
- Remove batteries during long periods of non-use.
- Remove exhausted batteries from the toy.
- Dispose of batteries safely. Do not dispose of batteries in fire.

## RECHARGEABLE BATTERIES

- Remove rechargeable batteries (if removable) from toy before charging.
- Rechargeable batteries are only to be charged under adult supervision.
- Do not charge non-rechargeable batteries.

## Disposal of batteries and product



The crossed-out wheellie bin symbols on products and batteries, or on their respective packaging, indicates they must not be disposed of in domestic waste as they contain substances that can be damaging to the environment and human health.

The chemical symbols Hg, Cd or Pb, where marked, indicate that the battery contains more than the specified value of mercury (Hg), cadmium (Cd) or lead (Pb) set out in the Batteries and Accumulators Regulation.



The solid bar indicates that the product was placed on the market after 13th August, 2005.

Help protect the environment by disposing of your product or batteries responsibly.

**VTech®** cares for the planet.

Care for the environment and give your toy a second life by disposing of it at a small electricals collection point so all its materials can be recycled.

In the UK:

Visit [www.recyclenow.com](http://www.recyclenow.com) to see a list of collection points near you.

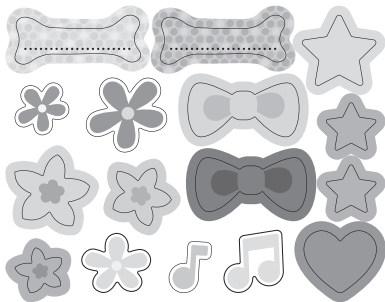
In Australia & New Zealand:

Check with your local council for kerbside collections.

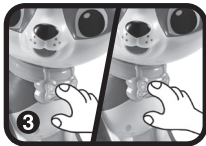
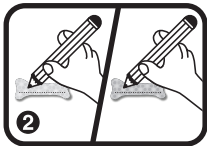


# PERSONALISE YOUR PUPPY

Congratulations on your puppy adoption! Stickers are provided to style your puppy any way you want. Please securely stick the labels to any smooth surface on the toy.

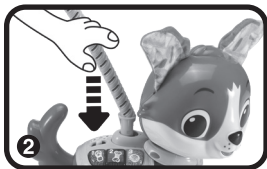


Fill out the included **Adoption Card** and keep it in a safe place. Write your puppy's name on the included bone-shaped sticker and stick it on the puppy's collar. Two dog tag stickers are provided.



# ACTIVATE NORMAL PLAY MODE

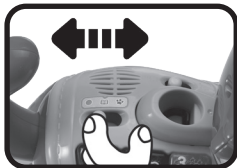
This product is in Try-Me mode in the packaging. When you play with the **Let's Go, My Friend Pup** for the first time, slide the **On/Off/Mode Selector** to Learning mode or Role-Play mode, and insert the **Lead** into the collar. You will hear three beeps to confirm that you have exited Try-Me mode.



## PRODUCT FEATURES

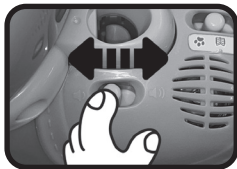
### 1. On/Off/Mode Selector

To turn the unit **On**, slide the **On/Off/Mode Selector** from **Off** to Learning mode or Role-Play mode. To turn the unit **Off**, slide the **On/Off/Mode Selector** to the **Off** position.



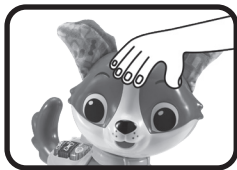
### 2. Volume Switch

To adjust the volume, slide the switch between the Low or High volume positions.



### 3. Touch Sensor

Pat the puppy's head to hear fun responses and play games.



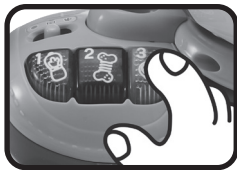
### 4. Push-Along Play

Push the puppy along for a walk to hear cute responses, melodies or sing-along songs. When the puppy is pushed faster, the melodies play faster. The puppy loves to walk with the **Lead**. Attach the **Lead** to his collar and go!



### 5. Colour Buttons

Let's learn colours and numbers with the puppy. Press the **Colour Buttons** to learn about the Colours yellow, red and green, and the numbers 1, 2 and 3.



### 6. Water Bottle

Insert the **Water Bottle** into the puppy's **Mouth** when he is thirsty. He feels better now!



## 7. Automatic Shut-Off

To preserve battery life, **Let's Go, My Friend Pup** will shut off automatically after several minutes without input. The unit can be turned on again by sliding the **On/Off/Mode Selector**, or by pressing any of the **Colour Buttons**.

**NOTE:** The **Red Button** will flash several times and power down when the unit's battery level is low. If the unit powers down or if the light fades out during play, please install a new set of batteries.

# ACTIVITIES

## 1. Learning Mode

Press the **Colour Buttons** to learn about colours, numbers, and the puppy's accessories. Pat the puppy's head for cute responses. Push the puppy along to hear sounds, melodies and songs.

## 2. Role-Play Mode

Interact with the puppy in ten different role-play scenarios. He will ask you to take him for a walk, pat his head, give him water and more. The puppy also likes colours and number games. Play with the puppy to keep him healthy and happy.

# SONG LYRICS

## Song 1

For I'm a jolly good doggie  
For I'm a jolly good doggie  
For I'm a jolly good doggie  
Which nobody can deny.  
Which nobody can deny.

## **Song 2**

I am a happy dog, a friendly dog,  
A dog who loves to walk.  
Walk and talk and walk and sniff.  
Love to sniff each and every whiff!

## **Song 3**

Let's go for a W-A-L-K, that's walk, walk, walk.  
If I got my lead on and my best pal  
Let's go for a walky, walky, walk, walk, walk.

## **Song 4**

Walking slowly, walking slowly,  
Gives you time, gives you time.  
To stop and smell the flowers,  
Feel the sun or showers,  
Sniff a lot, sniff a lot.

## **Song 5**

Walking quickly, walking quickly,  
Saves you time, saves you time.  
Gets you where you're going,  
Feel the wind a blowing,  
Through your hair, through your hair.  
Walking quickly, walking quickly,  
Saves you time, saves you time.  
Gets you where you're going,  
Feel the wind a blowing,  
Through your hair, through your hair!

## CARE & MAINTENANCE

1. Keep the unit clean by wiping it with a slightly damp cloth.
2. Keep the unit out of direct sunlight and away from any direct heat sources.
3. Remove the batteries if the unit will not be in use for an extended period of time.
4. Do not drop the unit on hard surfaces and do not expose the unit to moisture or water.
5. Do not manually force the puppy's head and legs to move.

## TROUBLESHOOTING

If for some reason the unit stops working or malfunctions, please follow these steps:

1. Turn the unit **Off**.
2. Interrupt the power supply by removing the batteries.
3. Let the unit stand for a few minutes, then replace the batteries.
4. Turn the unit **On**. The unit should now be ready to use again.
5. If the unit still does not work, install a new set of batteries.

# CONSUMER SERVICES

Creating and developing VTech products is accompanied by a responsibility that we at **VTech®** take very seriously. We make every effort to ensure the accuracy of the information, which forms the value of our products. However, errors sometimes can occur. It is important for you to know that we stand behind our products and encourage you to call our Consumer Services Department with any problems and/or suggestions that you might have. A service representative will be happy to help you.

## **UK Customers:**

Phone: 0330 678 0149 (from UK) or +44 330 678 0149 (outside UK)  
Website: [www.vtech.co.uk/support](http://www.vtech.co.uk/support)

## **Australian Customers:**

Phone: 1800 862 155  
Website: [support.vtech.com.au](http://support.vtech.com.au)

## **NZ Customers:**

Phone: 0800 400 785  
Website: [support.vtech.com.au](http://support.vtech.com.au)

# PRODUCT WARRANTY/ CONSUMER GUARANTEES

## **UK Customers:**

Read our complete warranty policy online at [vtech.co.uk/warranty](http://vtech.co.uk/warranty).

## **Australian Customers:**

**VTech ELECTRONICS (AUSTRALIA) PTY LIMITED –  
CONSUMER GUARANTEES**

Under the Australian Consumer Law, a number of consumer guarantees apply to goods and services supplied by VTech Electronics (Australia) Pty Limited. Please refer to [vtech.com.au/consumerguarantees](http://vtech.com.au/consumerguarantees) for further information.

**Visit our website for more  
information about our products,  
downloads, resources and more.**

***www.vtech.co.uk***  
***www.vtech.com.au***



TM & © 2022 VTech Holdings Limited.  
All rights reserved.  
IM-552500-001  
Version:0